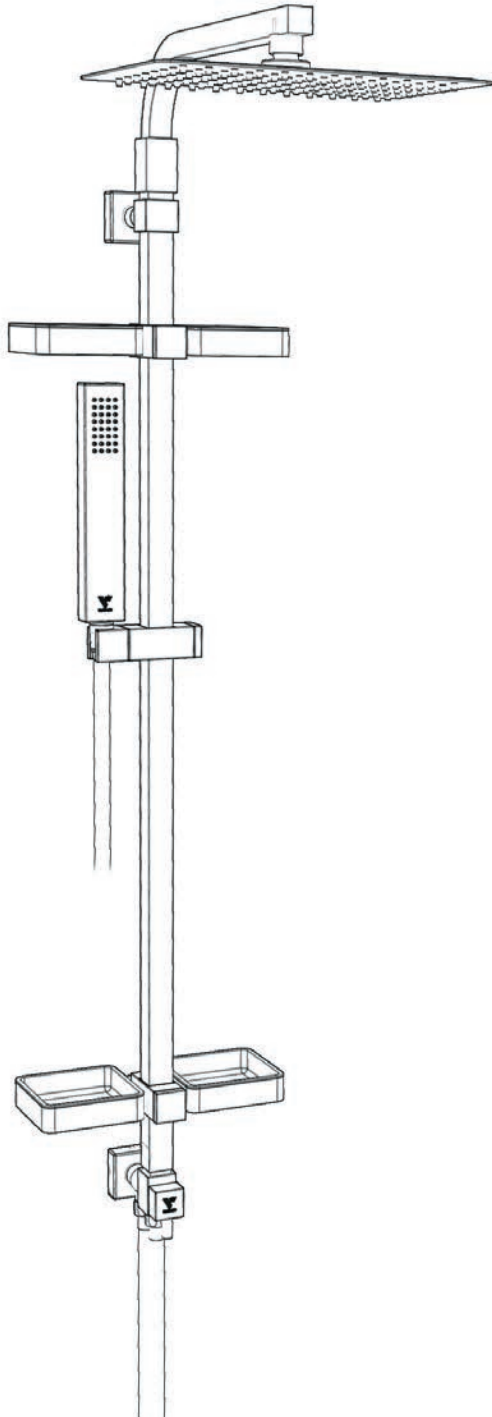
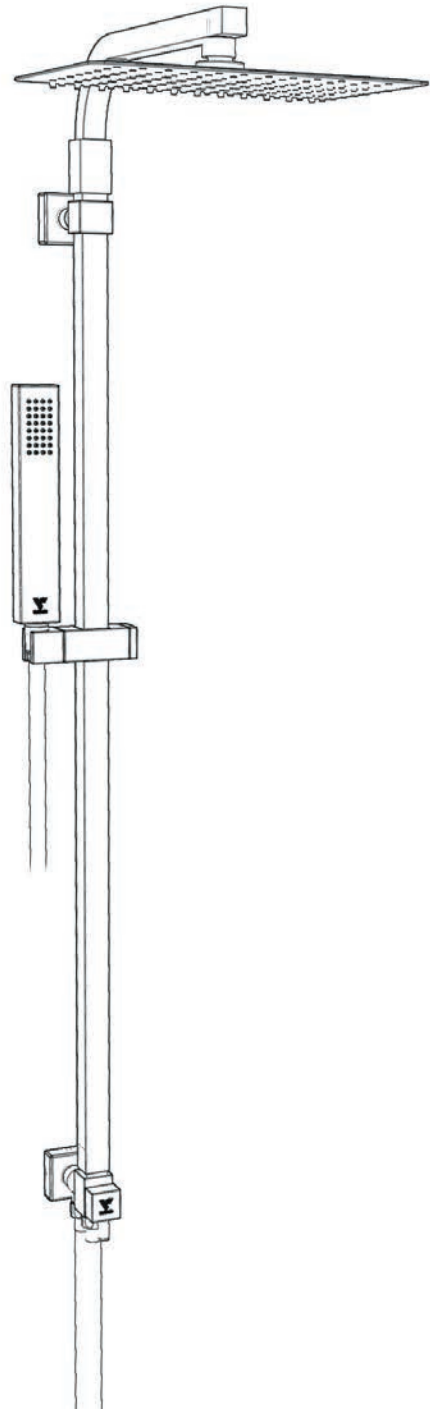


# • Touareg sans robinetterie

notice d'installation

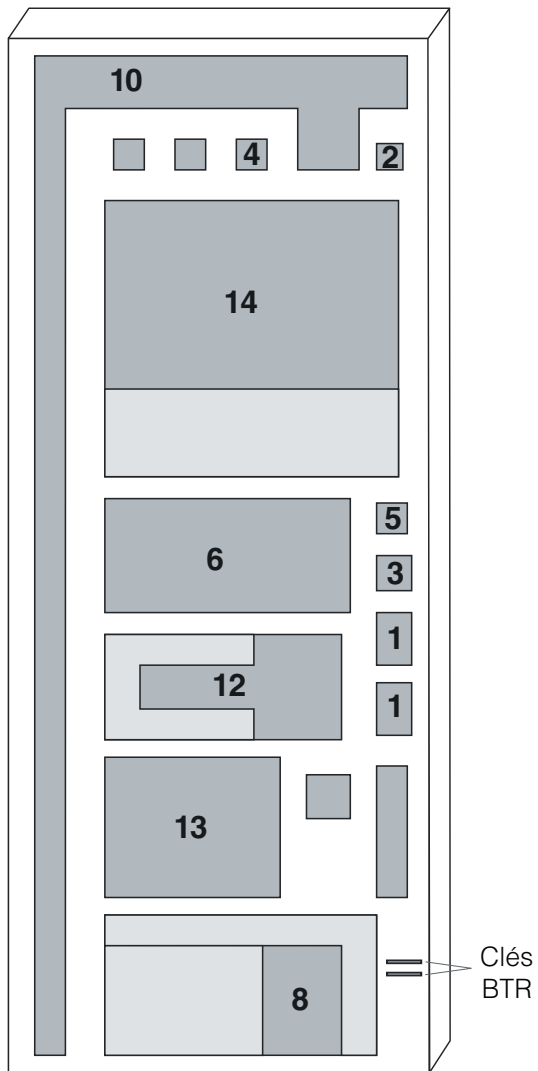


version  
avec tablettes

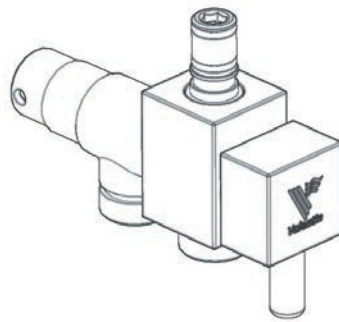


version  
sans tablette

**• contenu de l'emballage**



**Repère n° 8 - Inverseur**

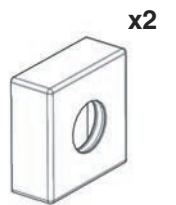


joint torique

x2



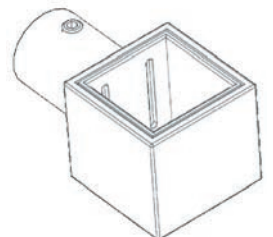
**Repère n° 1 - Pied mural**



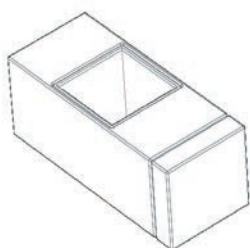
**Repère n° 2 - Rallonge de pied**



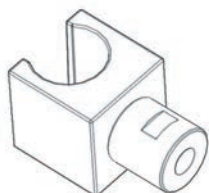
**Repère n° 3 - Pied de crosse**



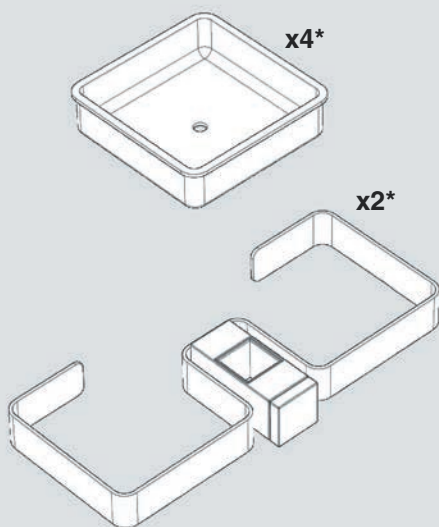
**Repère n° 4 - Curseurs**



**Repère n° 5 - Support douchette**

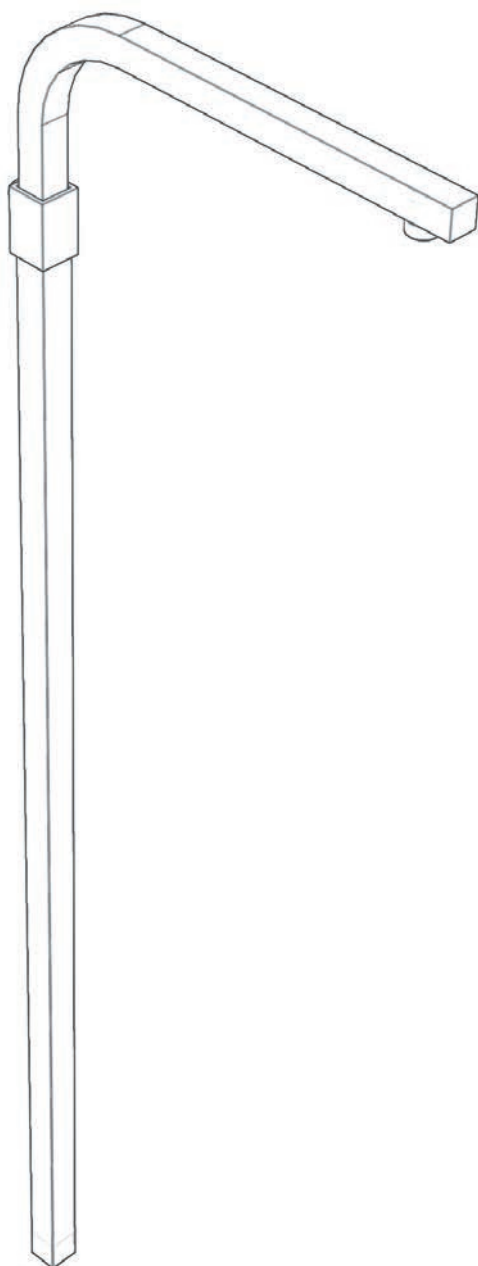


**Repère n° 6 - Tablettes\***

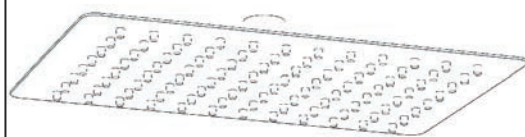


\*Uniquement pour la version avec tablette

**Repère n° 10 - Crosse télescopique**



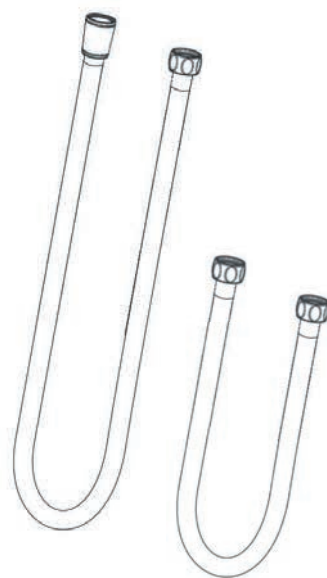
**Repère n° 14 - Pomme haute**



**Repère n° 12 - Douchette**



**Repère n° 13 - Flexibles**



Joint plat

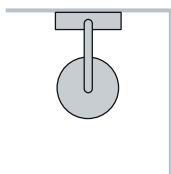
**x4**



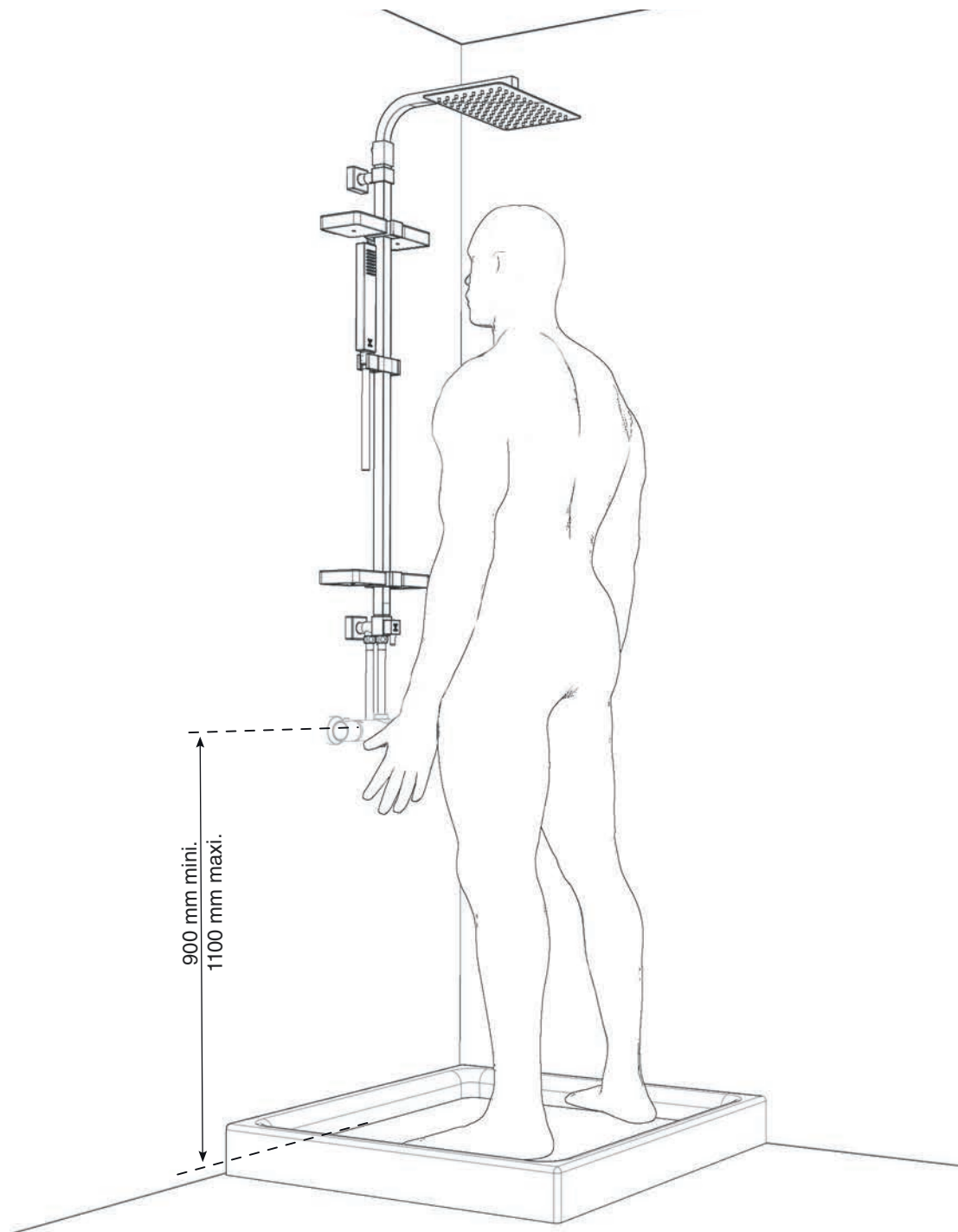
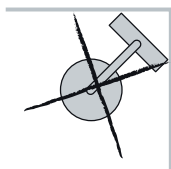
## • Condition d'installation

Installation :

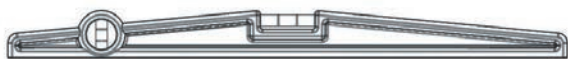
en façade



en angle



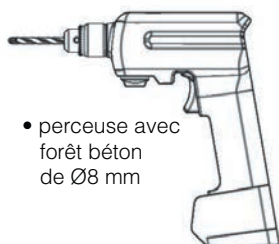
## • Outillage



• niveau



• mètre



• perceuse avec  
forêt béton  
de Ø8 mm



• marteau



• tournevis  
cruciforme



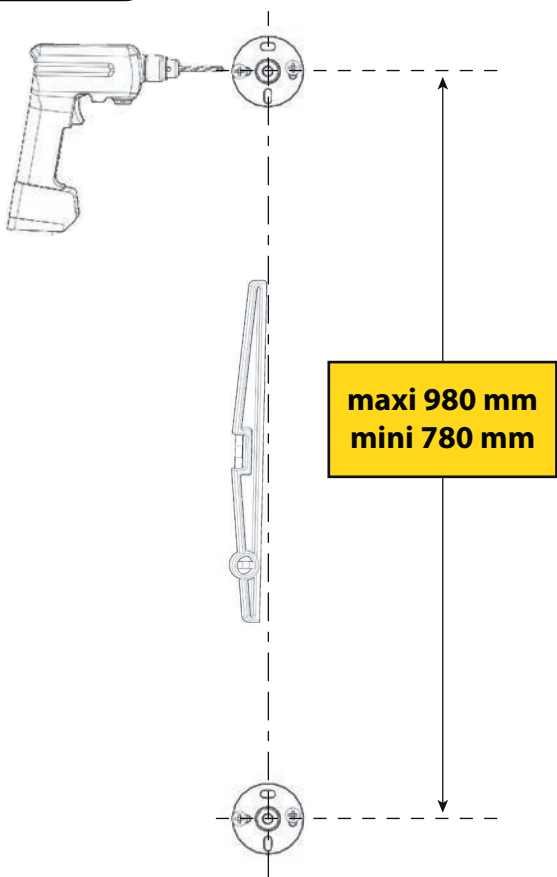
• crayon



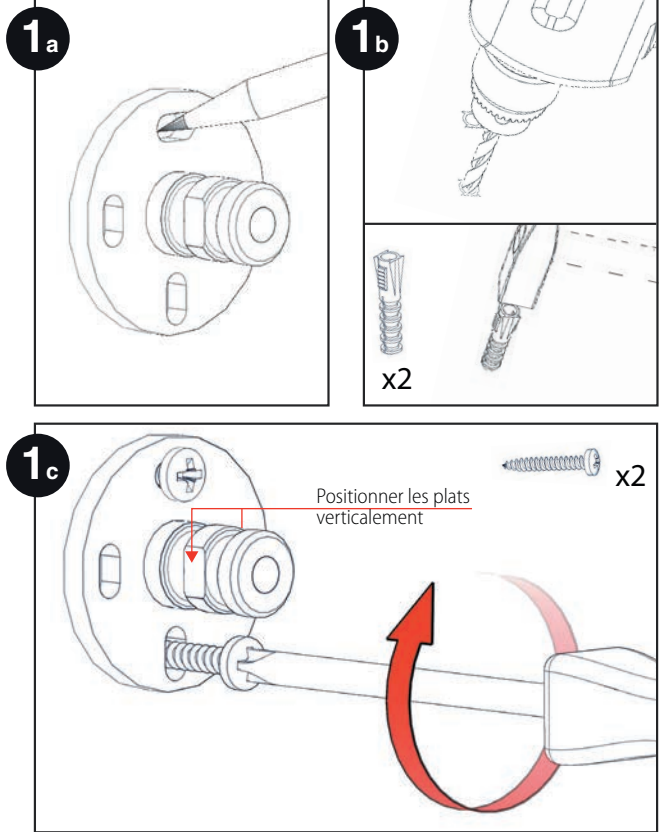
• clés plates

# • installation

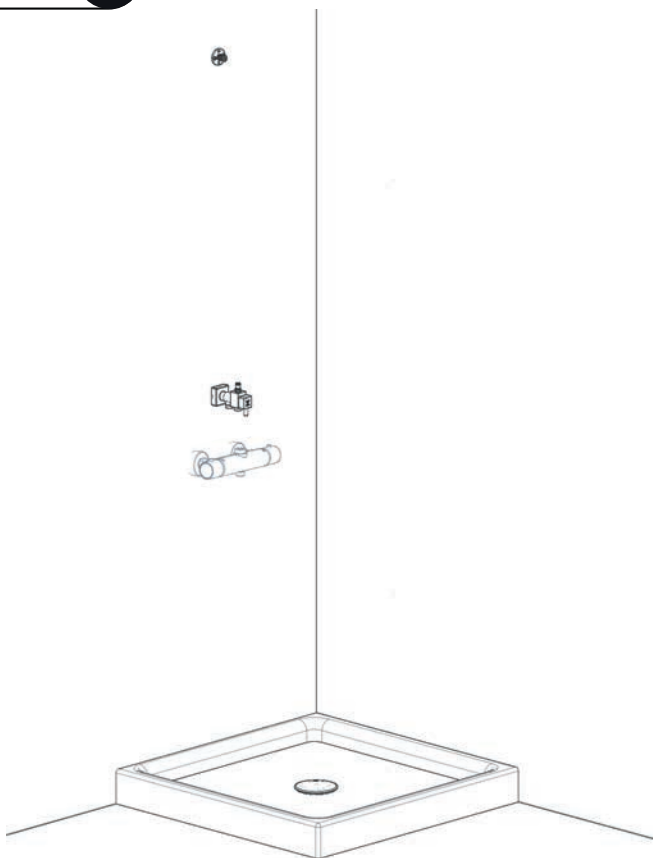
## étape 1 Pose du pied mural.



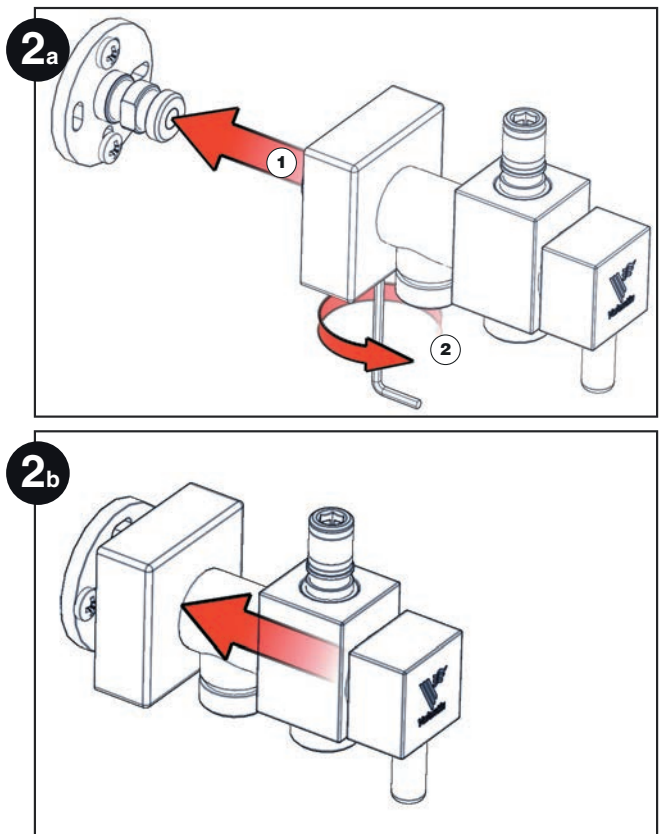
Repère n° 1



## étape 2 Pose de l'inverseur.

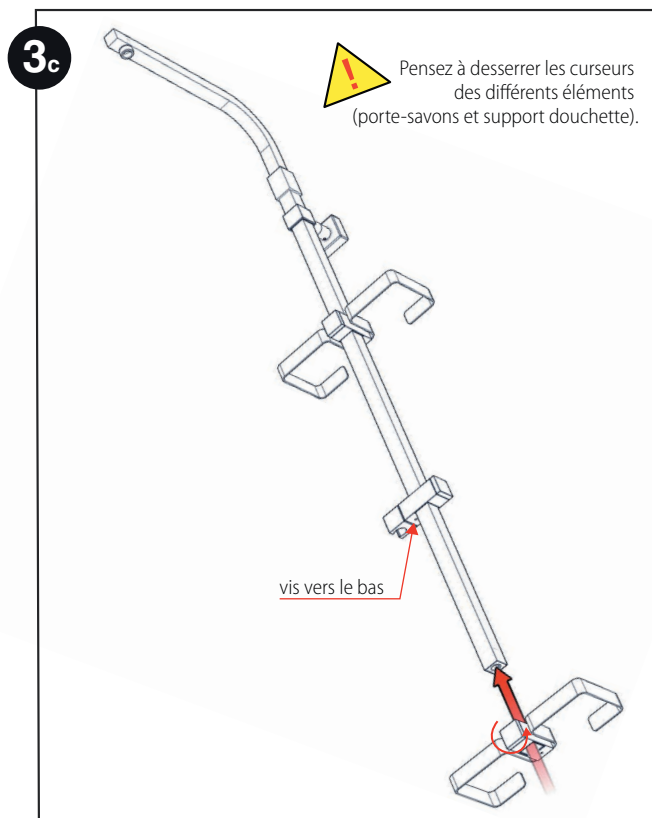
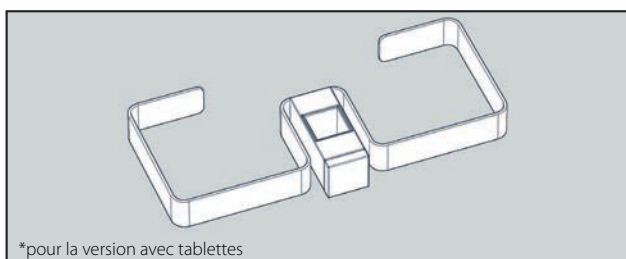
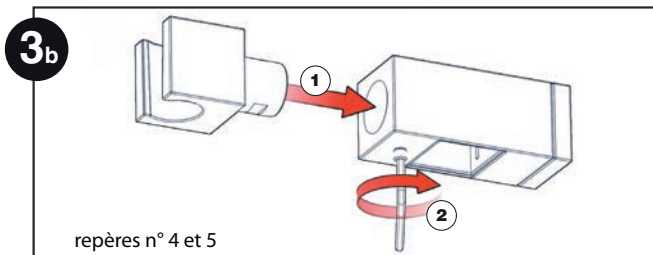
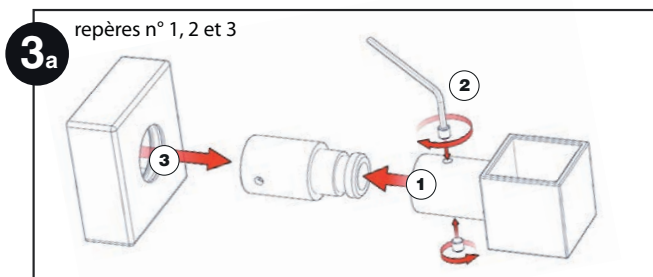


Repère n° 8



## • Assemblage des composants

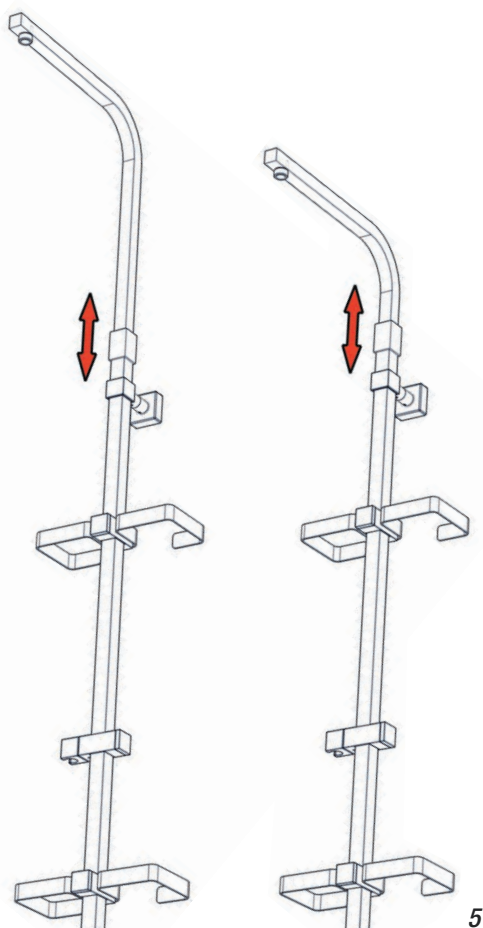
### étape 3



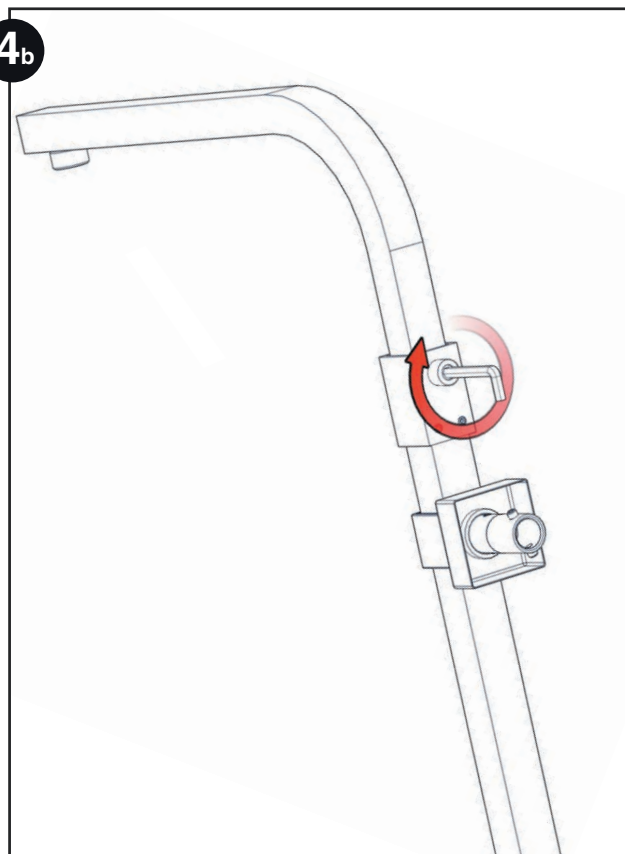
## • Réglage de la crosse

### étape 4

**4<sub>a</sub>**

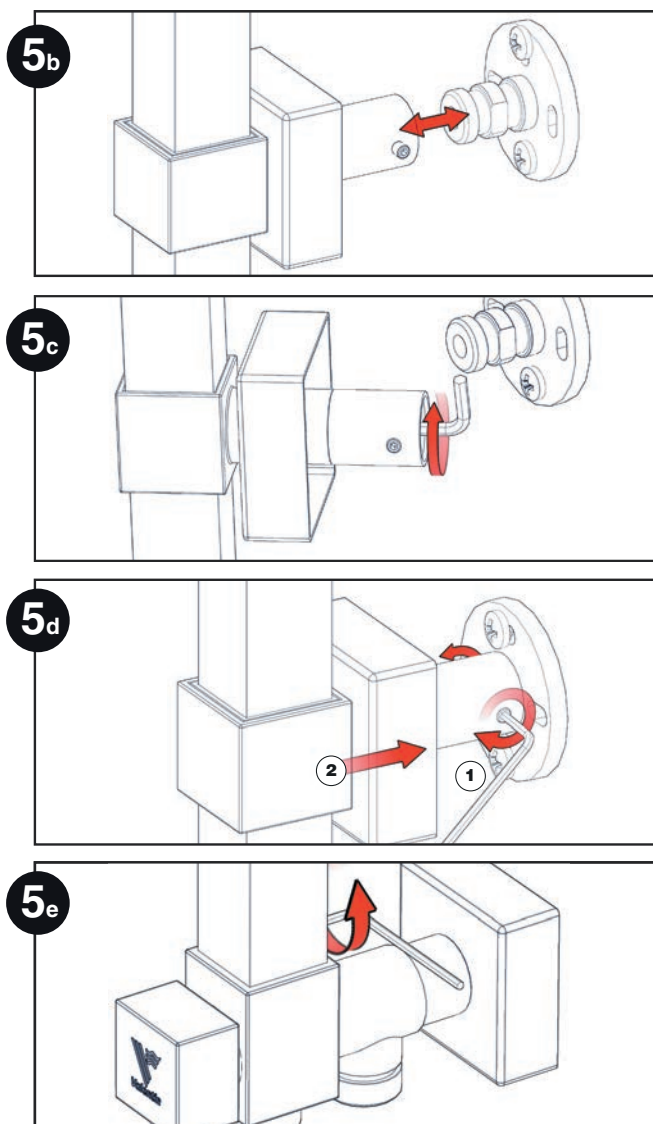
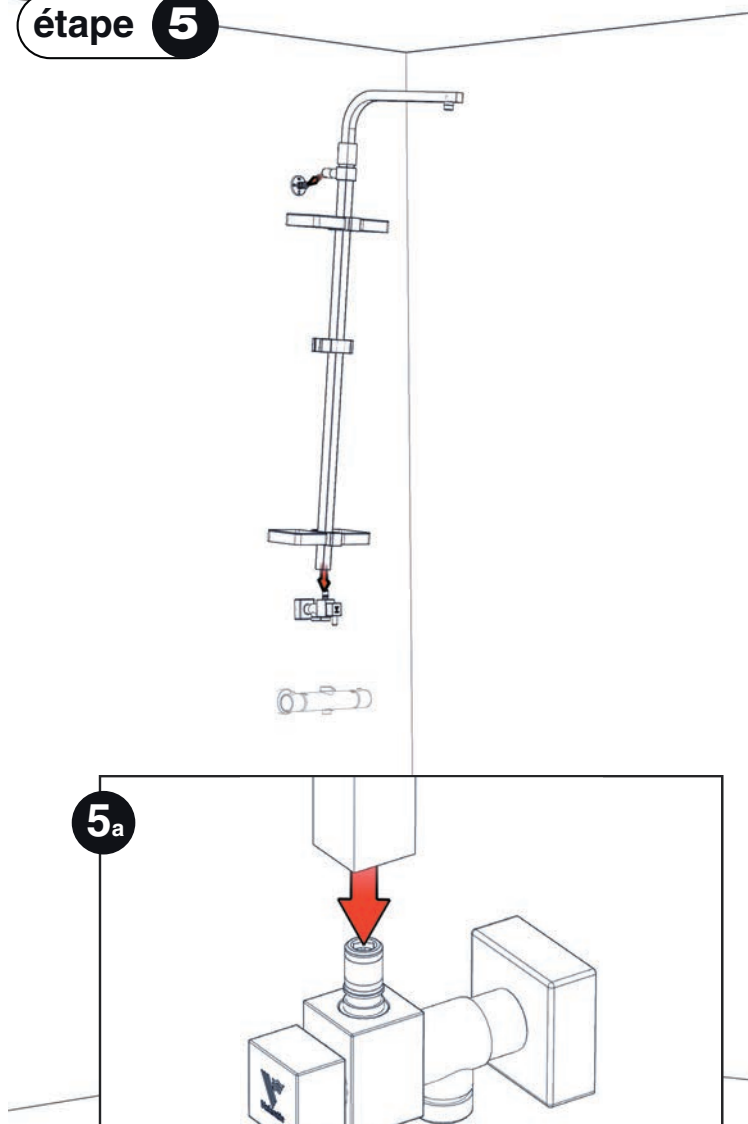


**4<sub>b</sub>**



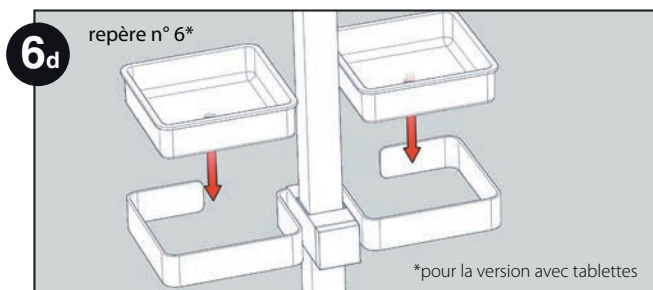
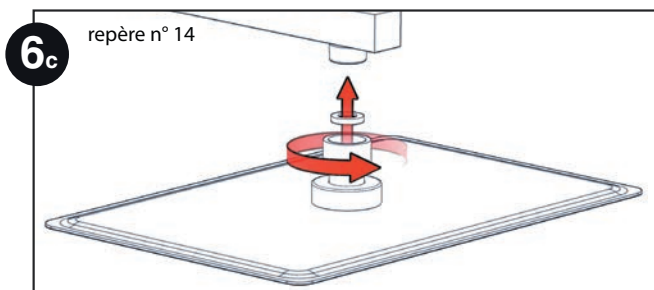
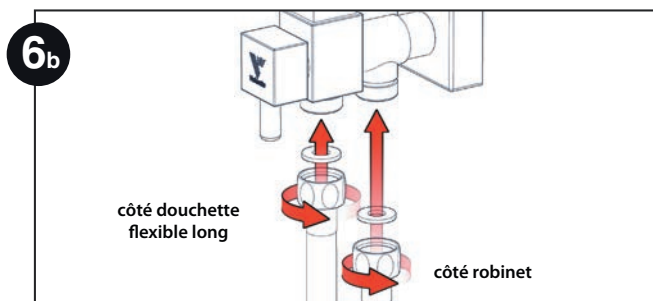
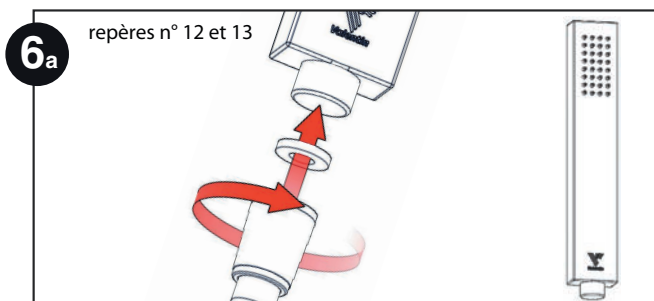
## • Assemblage de la crose sur le mur

### étape 5



## • Assemblage pomme haute, douchette et tablettes

### étape 6



\*pour la version avec tablettes